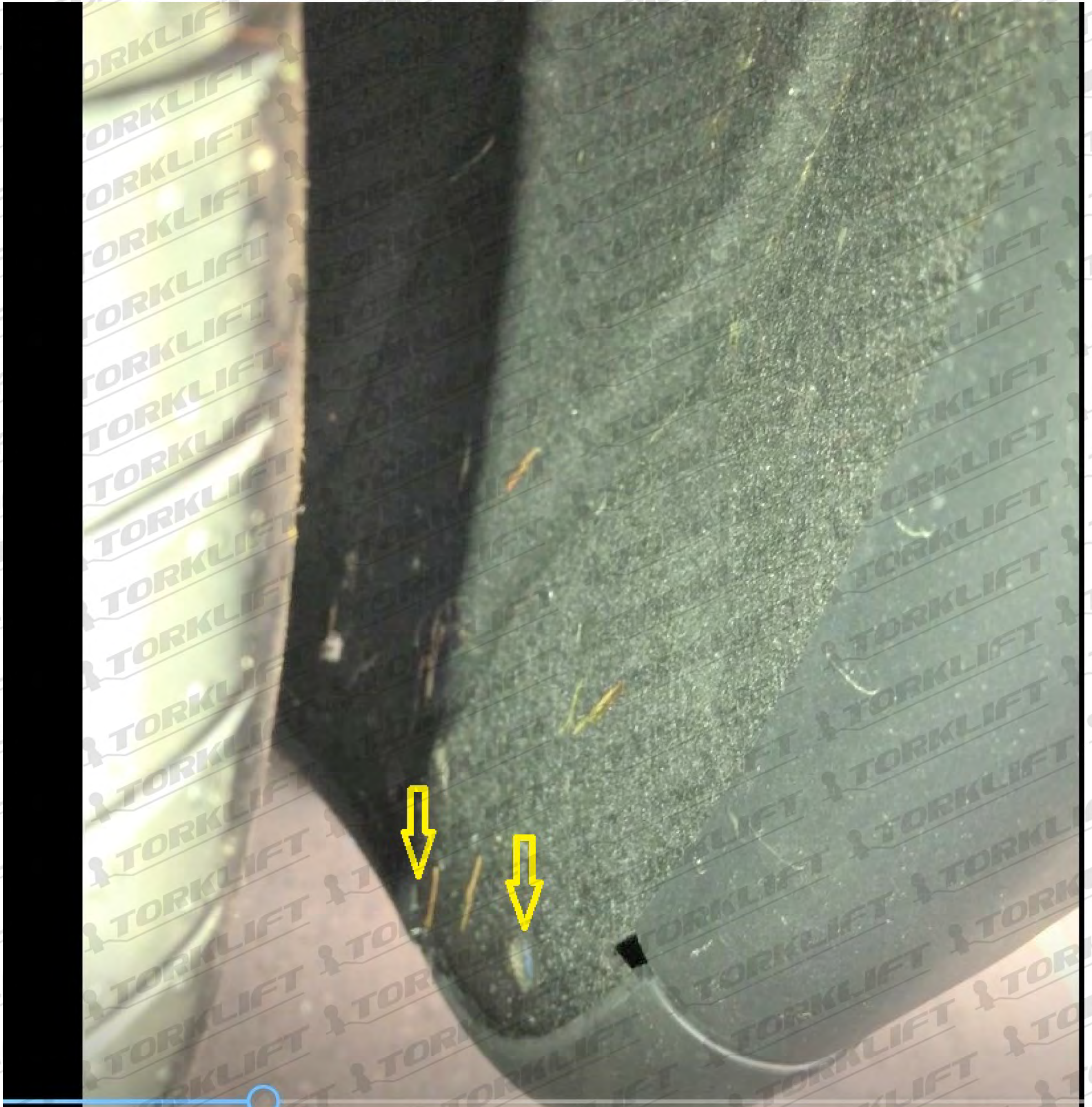


2020 Model Y and Model 3 Inductive Module Wiring Guide

The installation of the inductive Pick up module kit for these two Teslas are very similar. Some of the panels and retainer positions are slightly different but the basic install methods are the same. The signal wires do have different colors and are listed in this guide.

1. Remove screws for inner fender panel to bumper cover.



2. Gently pull the left and right interior side panel in the rear to gain access to back of light mounting and wiring harnesses where the inductive clamps will be attached. On the Model Y the panel just pulls off, on the Model 3 there are push in clips. See figures 2.1 and 2.2

Model Y interior panel
Figure 2.2

Model 3 interior
panel. Figure 2.1



3. Remove the lower center hatch sill plate trim molding by gently pulling up and out. See Figure 3.1



4. Remove rear taillights by pulling off one push on retainer and the taillight screws with 8 mm heads per side on the Model Y. The Model 3 has a twist retain on the top outside and a nuts behind the interior panel. See Figure 4.1



5.

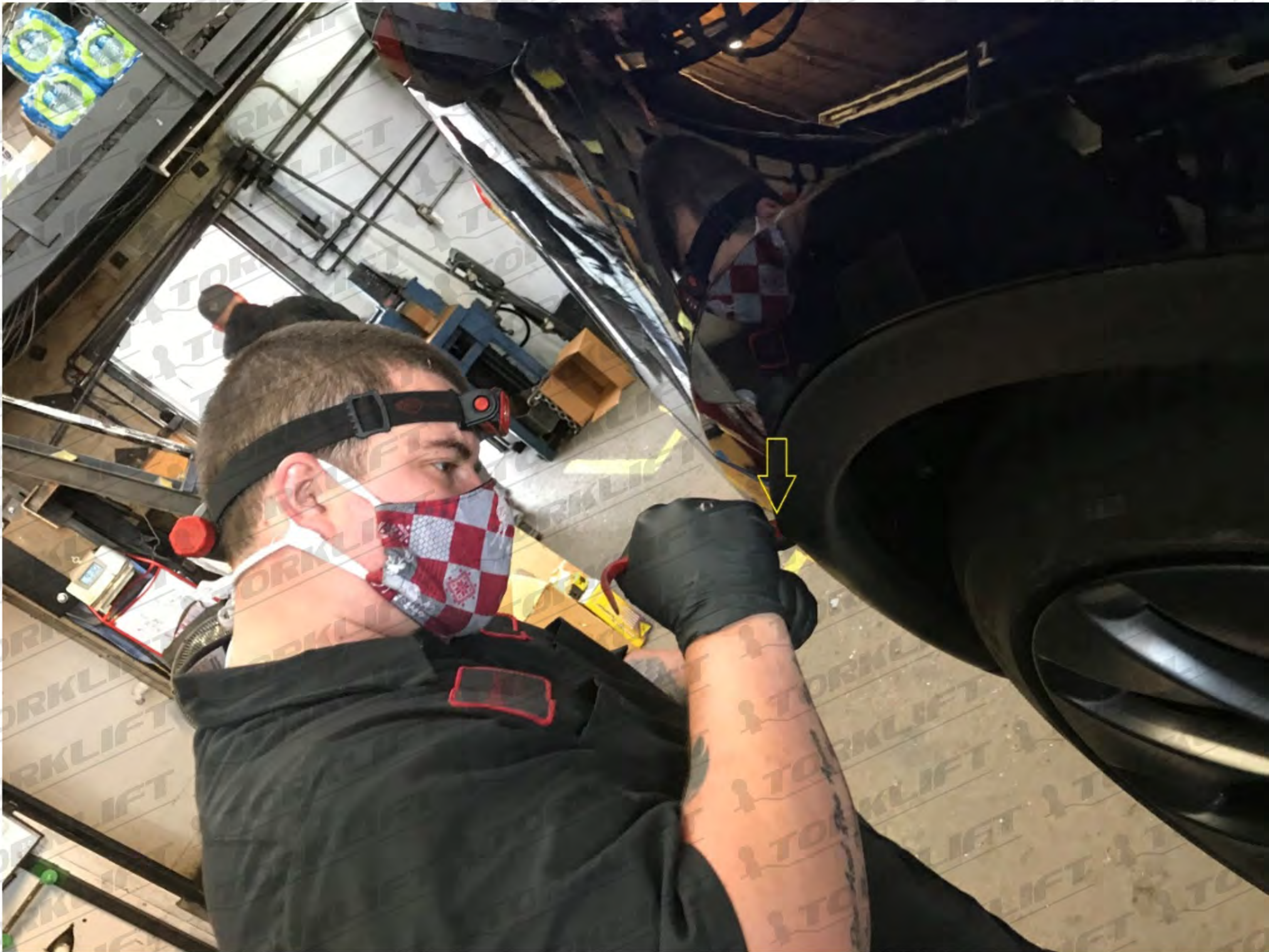


Model Y



6. Remove the screws with 10 mm heads from the underside of the rear bumper fascia on the model Y and enough of the retainers on the passenger side on the Model 3 to get access to run power and ground wires forward. **If you are installing a hitch also follow hitch instructions for removing bumper fascia on either car and disregard steps 7 and 8.**

7. Gently pull loose the wheel opening moldings on passenger and driver sides by gently prying out on the top of the molding with a plastic body panel tool. Start at the rear and work towards the front of the molding. You only need about half of the molding loose to get the rear bumper cover off or to get the passenger side of the bumper loose passenger side to run wires.



7. Remove the two screws with 8mm heads from under the Passenger side wheel opening molding on the Model Y. Remove the passenger rear wheel opening retainers on the Model 3 and pull the fender liner back to gain access and run power and ground wires forward.



8. Gently pop the rear bumper cover loose starting from the outsides and working towards the center. There are snap in retainers along the top edge of the bumper cover from side to side.
9. If not removing the bumper just loosen bumper fascia enough to gain access to pass the power and ground wires forward along the passenger side.
10. Run a power and ground wire from the battery in front under cowl (Figure 10.1) along the bottom of the vehicle on passenger side tucking it under the plastic underbody panel (Figure 10.2) all the way to the passenger side rear. Run the wires through the passenger side body vent louvers (Figure 10.3), up into the passenger compartment behind the passenger side rear interior panel (figure 10.4).



Figure 10.1

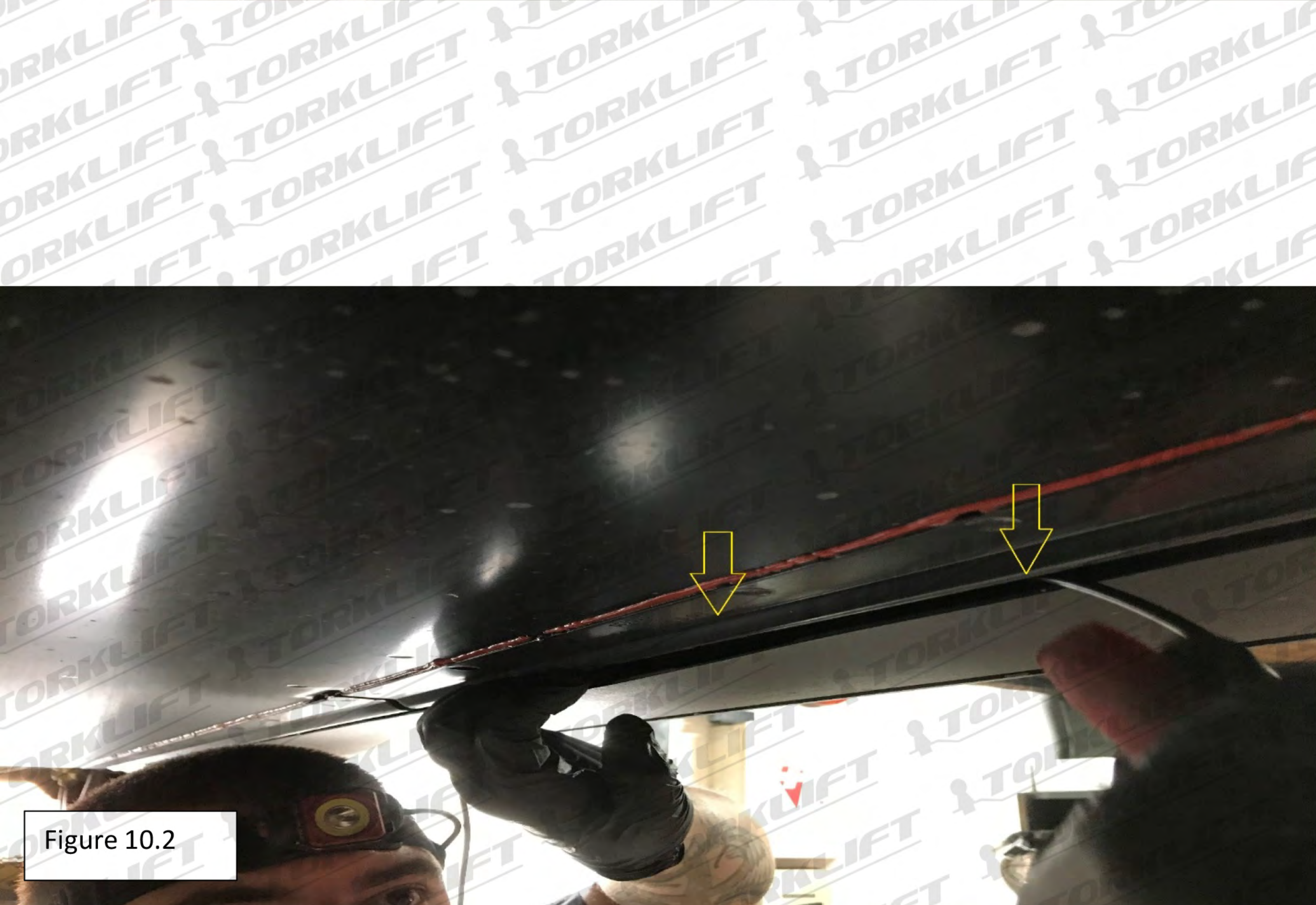


Figure 10.2



Figure 10.3

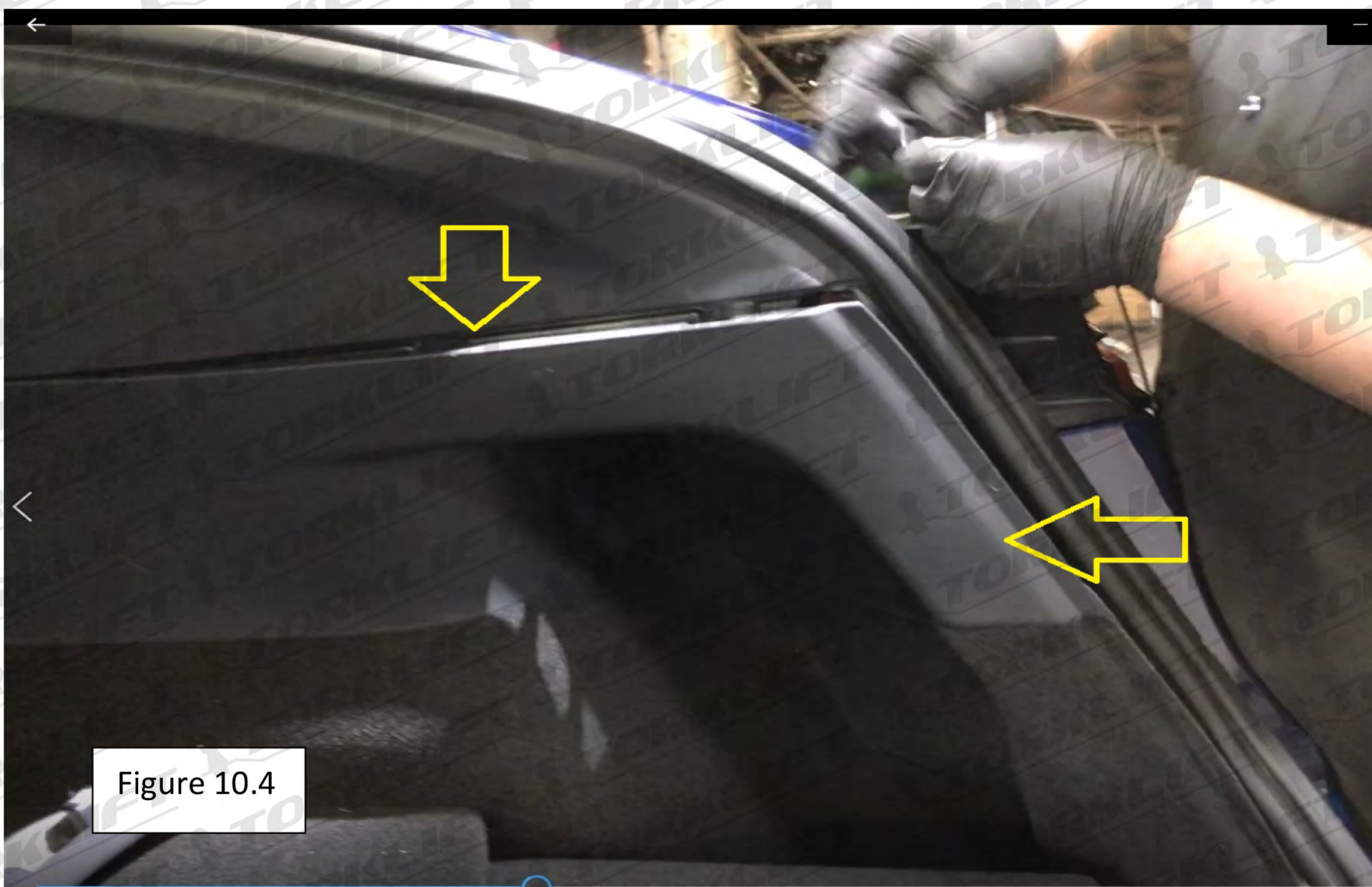


Figure 10.4

11. An inline fuse holder with a 15 amp fuse needs to be installed near the battery in the power wire ran from the front of the car to the rear. The Zero Contact interface that Torklift sells includes the fuse holder and some extra wire.
12. These power and ground wires ran directly to the battery will be used to power the Zero Contact module which will be installed and hidden behind the passenger side rear under interior side panel. It is a good idea to check all the signal wires for power to check their functions.
13. The inductive clamps will be clamped around the wires as follows.

On a Model Y:

Right turn red wire only (connected with inductive clamp on the wire harness behind passenger taillight)
Left turn red (connected with inductive clamp on wire behind driver's side taillight).
Brake is Yellow (connected to taillight harness behind either taillight)
Separate tail wire going into module is not used

14. After all the wires are connected the Zero Contact interface will need to be programmed as follows: Start vehicle and turn all functions off: Tail (head lights), brake and turns. Initiate ZCI learn mode by inserting a 15 amp fuse into fuse holder. • Activate each function separately for approximately 5 seconds (Tail, brake, right turn and left turn). • Test and verify installation with a test light or trailer. • Hand ZCI Reference card to vehicle owner or place in glove box.

Note: some Model Y's may come with a Factory pre-wiring plug located drivers side rear under bumper cover. The following are the colors and their functions at that connector.

Model Y:

Power: red
Left turn: green
Right turn: Small purple
Tail: Brown

Model 3

Left turn: Purple
Right turn: Red
Stop: White or Gray
Tail: Yellow

